

**ARCADIA** EXHIBITIONS presents

# **A STRONG IN-YOUR-FACE WORD**

## **WORKS FROM THE BRODSKY CENTER AT PAFA**

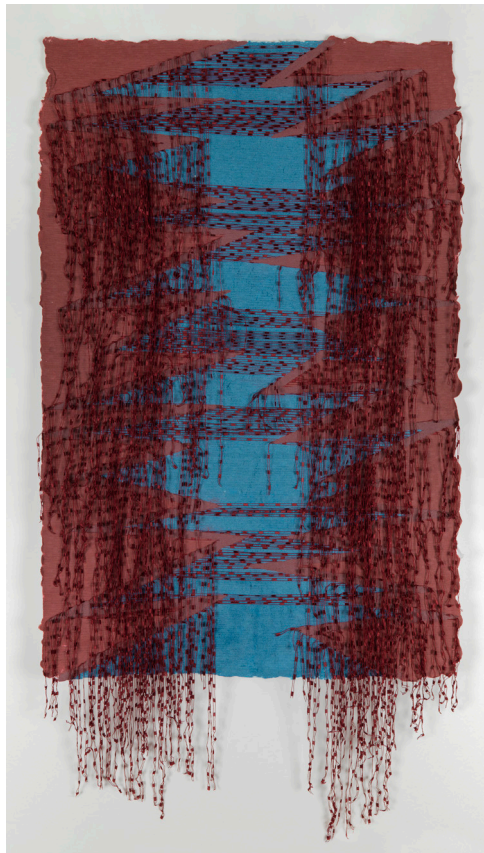
FEB 6 – APR 21, 2024

Spruance Gallery

### **Exhibition Checklist**

Dimensions are in inches: height precedes width.

All works courtesy of the Brodsky Center at PAFA, Philadelphia.



**Liz Collins** (American, b. 1968)

*Fractured/Portal*

2021

Handmade cotton paper with cotton pulp painting, embedded rayon yarns,  
and pigmented cotton pulp

57 x 30

Unique edition of 2 variants.

Published by the Brodsky Center at PAFA, Philadelphia.



**Liz Collins** (American, b. 1968)

*Fractured/Smoldering*

2021

Handmade cotton paper with cotton pulp painting, embedded rayon yarns, and pigmented cotton pulp

57 x 30

Unique edition of 2 variants.

Published by the Brodsky Center at PAFA, Philadelphia.



**Yolanda M. López** (American, b. 1942–2021)

*Your Vote Has Power*

1997

Four color lithograph on Arches 88 paper

25 x 22

Edition of 20. Published by the Brodsky Center at PAFA, Philadelphia.



**Farah Ossouli** (Iranian, b. 1953)

*Nostalgia*  
2014

Fifteen-color silkscreen and archival pigment inkjet print in archival pigment ink of Sunset Cotton Etching Paper

34 x 24

Edition of 10. Published by the Brodsky Center at PAFA, Philadelphia.



**Sharon Hayes** (American, b. 1970)

*The Nature of the Beast*

2019

Five-color plate lithograph on Somerset Satin White paper

Five parts, 17 x 20 each

Edition of 10. Published by the Brodsky Center at PAFA, Philadelphia.



**Zoë Charlton** (American, b. 1973)

*struldbrugs*

2022

Watermarked handmade paper of cotton and abaca fibers with pigmented linen pulp painting

90 1/8 x 46 1/4

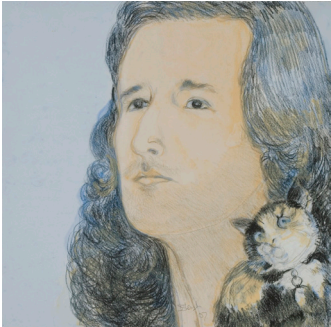
Edition of 4. Published by the  
Brodsky Center at PAFA, Philadelphia.

*Femfolio*  
2007

A portfolio featuring twenty prints by twenty artists.  
Archival pigment inkjet print with lithograph, pochoir, hand coloring, and gold dusting on paper

Twenty parts, 12 x 12 each

Edition of 60. Published by the Brodsky Center at PAFA, Philadelphia.



**Sylvia Sleight** (American, b. 1942)

*Douglas John and Ms. Smith*

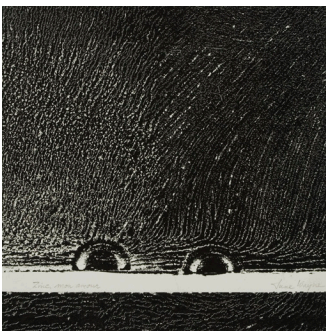
Lithograph, archival pigment inkjet print on Somerset Enhanced Velvet paper



**Joan Snyder** (American, b. 1940)

*Angry Women*

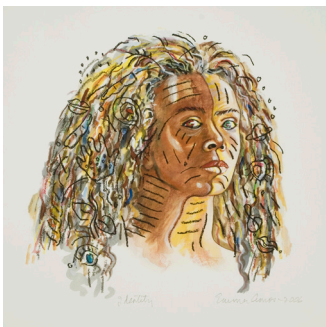
Lithograph, archival pigment inkjet print, and hand coloring on Hahnemühle German Etching paper



**June Wayne** (American, 1918–2011)

*Zinc, Mon Amour*

Archival pigment inkjet print on paper



**Emma Amos** (American, 1937–2020)

*Identity*

Lithograph and archival pigment inkjet print on Hahnemühle German Etching paper



**Mary Beth Edelson** (American, 1933–2021)

*Goddess Head/Soft*

Archival pigment inkjet print on Somerset Enhanced Velvet paper



I Make Up the Image of My Perfection

I Make Up the Image of My Deformity

**Martha Wilson** (American, b. 1947)

*I Make Up the Image of My Perfection/I Make Up the Image of My Deformity*

Archival pigment inkjet print on Somerset Enhanced Velvet paper



**Faith Ringgold** (American, b. 1930)

*Coming to Jones Road: Under a Blood Red Sky #8*

Lithograph and archival pigment inkjet print on Somerset Enhanced Velvet paper

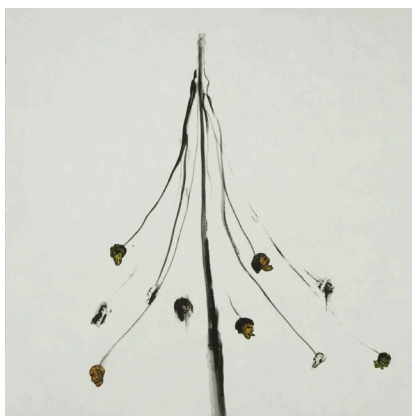


**Lauren Ewing** (American, b. 1946)

*For Magritte*

Archival pigment inkjet print on Epson Enhanced Matte paper

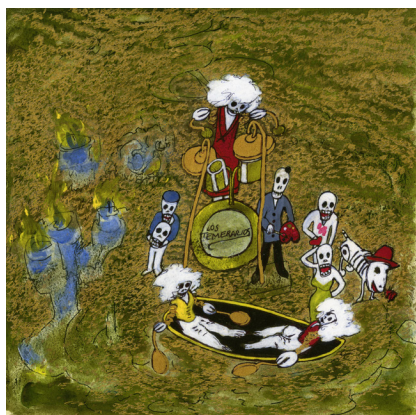




**Nancy Spero** (American, 1926–2009)

*Maypole–War*

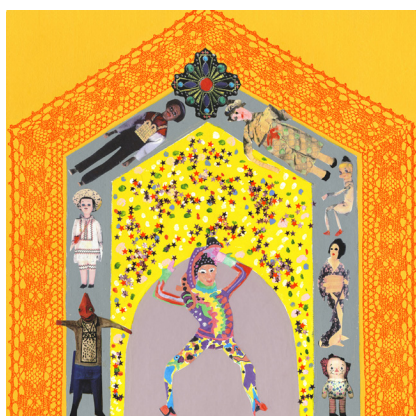
Lithograph and archival pigment inkjet print on Hiromi Digital Kozo White paper



**May Stevens** (American, 1924–2019)

*The Band Played On*

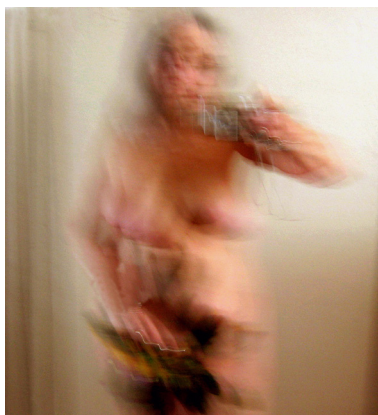
Lithograph, archival pigment inkjet print, and gold dusting on Somerset Enhanced Velvet paper



**Miriam Schapiro** (American, b. Canada 1923–2015)

*Court Jester*

Lithograph and archival pigment inkjet print on Arches Infinity paper



**Joan Semmel** (American, b. 1942)

*Untitled*

Archival pigment inkjet print on Somerset Enhanced Velvet paper



**Carolee Schneemann** (American, 1939–2019)

*Evidence*

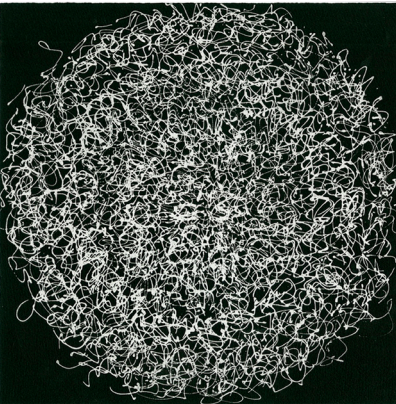
Lithograph and archival pigment inkjet print on Hahnemühle German Etching paper



**Diane Neumaier** (American, b. 1946)

*Toccata*

Lithograph and archival pigment inkjet print on Hahnemühle German Etching paper



**Athena Tacha** (American, b. Greece, b. 1936)

*Knots*

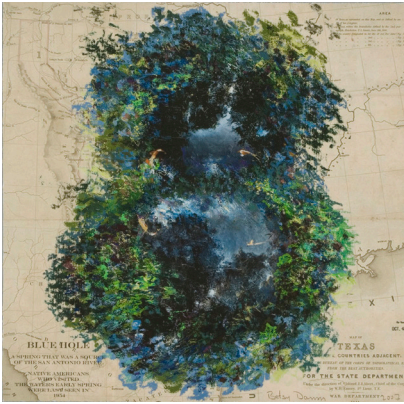
Two-run lithograph on Arches Cover Black paper



**Nancy Azara** (American, b. 1935)

*Broken Leaf*

Lithograph, archival pigment inkjet print, and pochoir on Arches Infinity paper



**Betsy Damon** (American, b. 1940)

*Blue Hole*

Archival pigment inkjet print and hand coloring on Somerset Enhanced Velvet paper



**Joyce Kozloff** (American, b. 1942)

*Maui: Sugar Plantation*

Lithograph and archival pigment inkjet print on Hahnemühle German Etching paper



**Eleanor Antin** (American, b. 1935)

*Dance of Death*

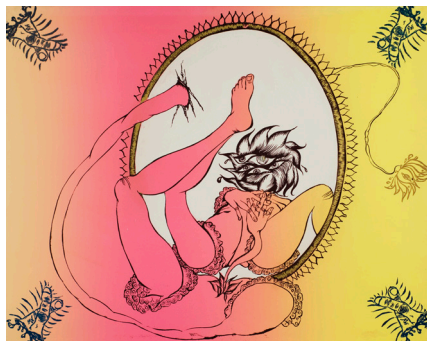
Archival pigment inkjet print on Hiromi Zangetsu paper



**Harmony Hammond** (American, b. 1944)

*Double Elegy*

Lithograph and archival pigment inkjet print on Hahnemühle German Etching paper



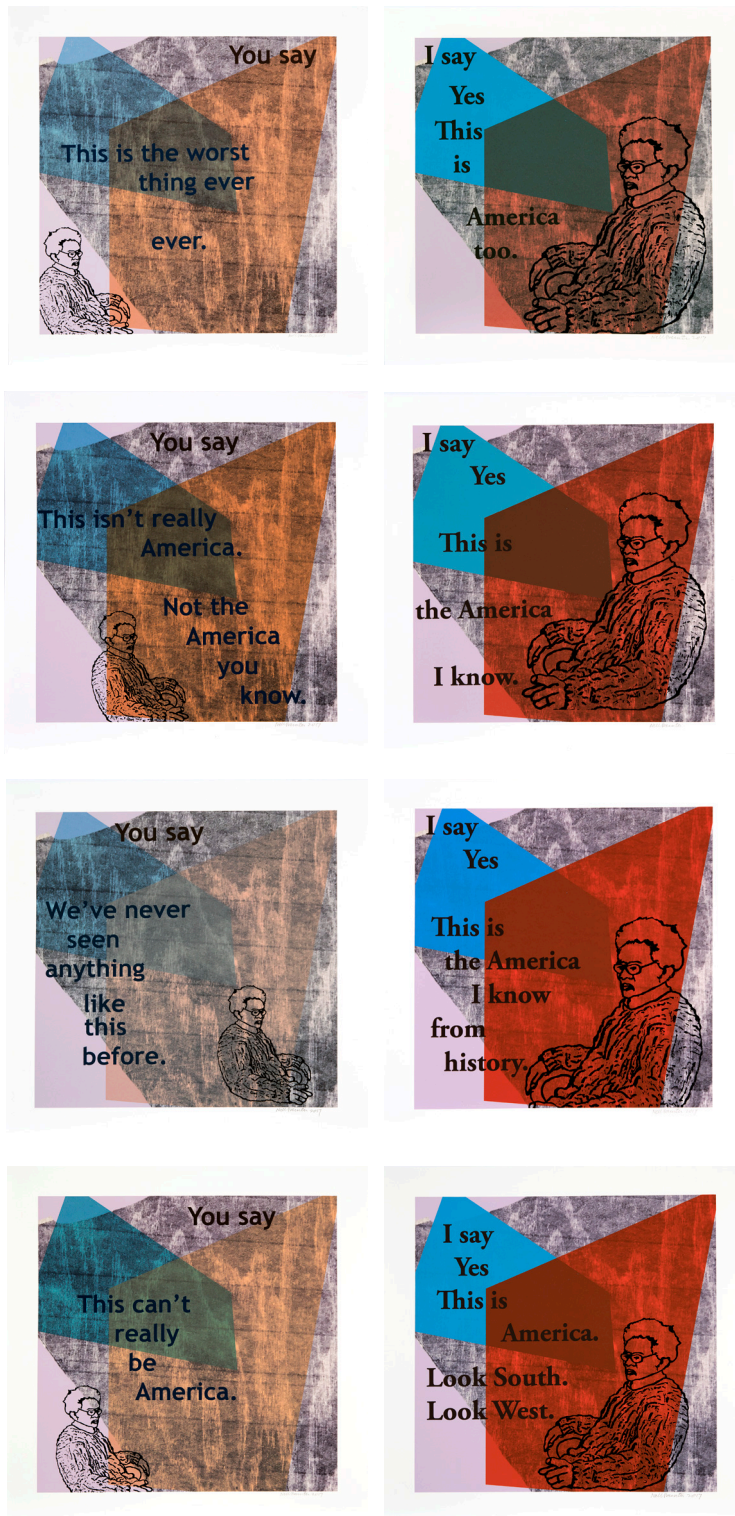
**Chitra Ganesh** (American, b. 1975)

*Delicate Line: (Corpse She Was Holding)*  
2009–2010

Portfolio of 11 silkscreen prints with lithograph, monotype, relief, and glitter on commercial and handmade paper

22 x 28 each

Edition of 20. Published by the Brodsky Center at PAFA, Philadelphia.



**Nell Painter** (American, b. 1942)

*You Say This Can't Really Be America*

2017

Silkscreen and archival pigment inkjet print on Sunset Cotton Etching Paper  
Eight parts, 17 x 17 each

Edition of 10. Published by the Brodsky Center at PAFA, Philadelphia.



**Jonathan Lyndon Chase** (American, b. 1989)

*Forehead Kiss*

2019

Four-color lithograph on Somerset Satin White paper.

Archival pigment inkjet print on store-bought ready-made brown paper lunch bag with CD inside with additional media.

Two parts: lithograph 13 1/2 x 11

archival pigment inkjet print 6 1/2 x 5 1/4

Edition of 10. Published by the Brodsky Center at PAFA, Philadelphia.